

## Lifting eye nuts

Steel / Stainless Steel

### SPECIFICATION

#### Version in Steel ST

- Steel C 15 E
- drop-forged
- annealed
- contact face machined
- zinc plated, blue passivated

#### Version in Stainless Steel A2 NI

- drop-forged
- contact face machined

#### Version in Stainless Steel A4

- drop-forged
- contact face machined

### INFORMATION

The following guidelines of the lifting eye nuts DIN 582 have to be observed in addition to the load values given in the above table:

The eye nut must be of fully screwed in to achieve a perfect contact between the two mating faces.

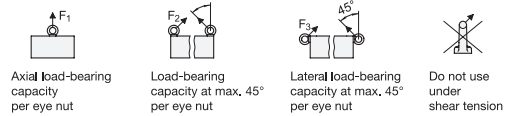
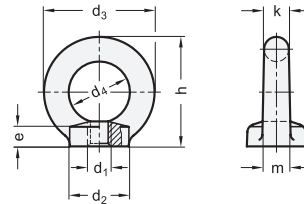
Both threads must be of an equal length and the base material of equal strength to that of the nut.

Operating instructions with more details and specifications are included with every delivery.

The official DIN standard sheet specifies the additional sizes M42, M48, M56, M64, M72 x 6, M80 x 6 and M100 x 6.

### TECHNICAL INFORMATION

- Stainless Steel characteristics (see page A26)



### DIN 582

Description	d1	d2	d3	d4	e	h	k	m	F1 max. in N	F2 max. in N	F3 max. in N	⚖️
DIN 582-M8-ST	M 8	20	36	20	8.5	36	8	10	1400	1000	700	50
DIN 582-M10-ST	M 10	25	45	25	10	45	10	12	2300	1700	1150	100
DIN 582-M12-ST	M 12	30	54	30	11	53	12	14	3400	2400	1700	155
DIN 582-M16-ST	M 16	35	63	35	13	62	14	16	7000	5000	3500	220
DIN 582-M20-ST	M 20	40	72	40	16	71	16	19	12000	8600	6000	360
DIN 582-M24-ST	M 24	50	90	50	20	90	20	24	18000	12900	9000	720
DIN 582-M30-ST	M 30	65	108	60	25	109	24	28	32000	23000	16000	1320
DIN 582-M36-ST	M 36	75	126	70	30	128	28	32	46000	33000	23000	2130

### DIN 582-NI

STAINLESS STEEL

Description	d1	d2	d3	d4	e	h	k	m	F1 max. in N	F2 max. in N	F3 max. in N	⚖️
DIN 582-M8-NI	M 8	20	36	20	8.5	36	8	10	1400	1000	700	50
DIN 582-M10-NI	M 10	25	45	25	10	45	10	12	2300	1700	1150	100
DIN 582-M12-NI	M 12	30	54	30	11	53	12	14	3400	2400	1700	160
DIN 582-M16-NI	M 16	35	63	35	13	62	14	16	7000	5000	3500	240
DIN 582-M20-NI	M 20	40	72	40	16	71	16	19	12000	8600	6000	340
DIN 582-M24-NI	M 24	50	90	50	20	90	20	24	18000	12900	9000	650

### DIN 582-A4

STAINLESS STEEL

Description	d1	d2	d3	d4	e	h	k	m	F1 max. in N	F2 max. in N	F3 max. in N	⚖️
DIN 582-M10-A4	M 10	25	45	25	10	45	10	12	2300	1700	1150	88
DIN 582-M12-A4	M 12	30	54	30	11	53	12	14	3400	2400	1700	167
DIN 582-M16-A4	M 16	35	63	35	13	62	14	16	7000	5000	3500	249
DIN 582-M20-A4	M 20	40	72	40	16	71	16	19	12000	8600	6000	380
DIN 582-M24-A4	M 24	50	90	50	20	90	20	24	18000	12900	9000	753

